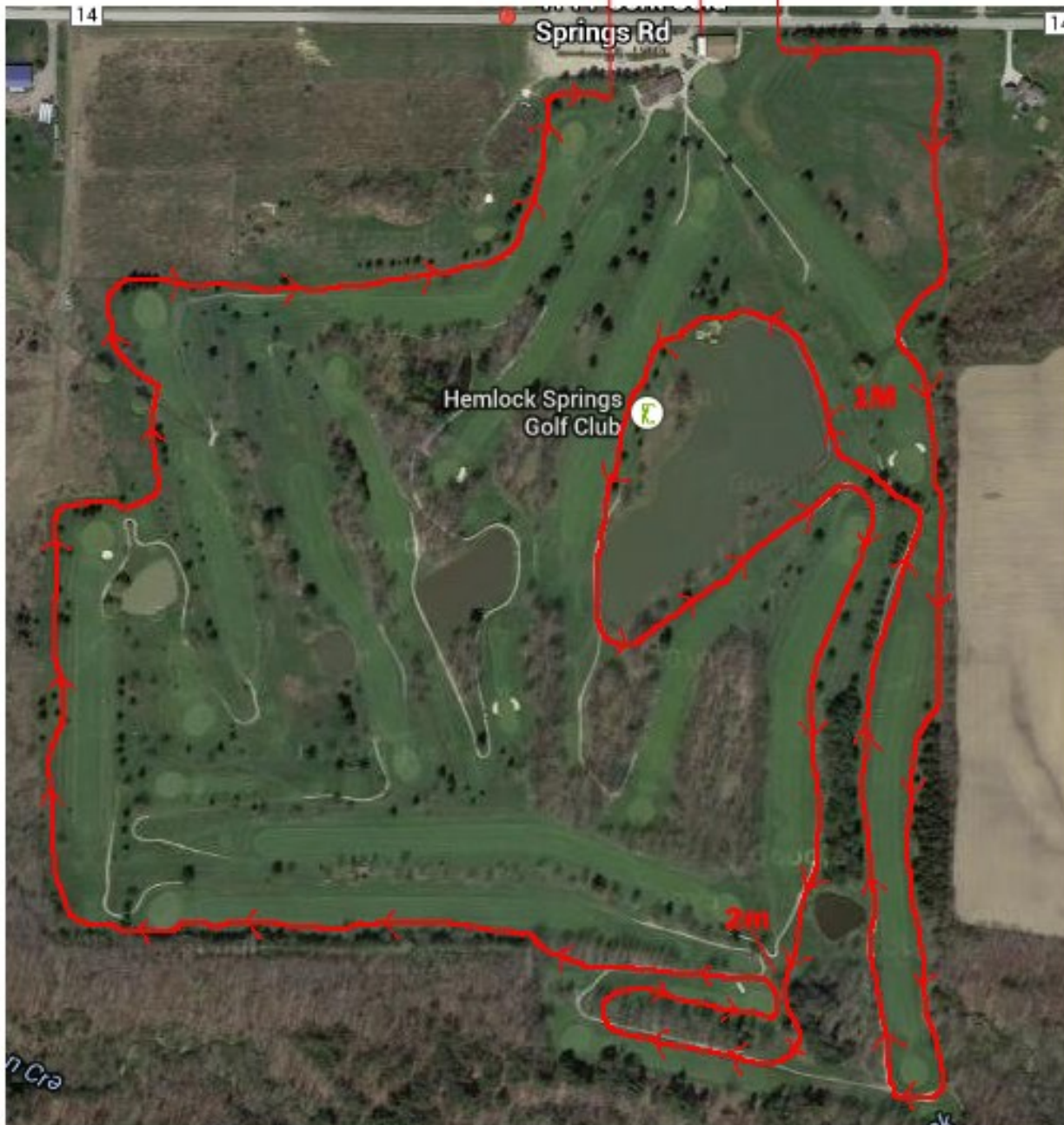


2014 All-County Meet

*Course will be marked with
Paint and Runners will be
guided by Volunteers.



The Course starts @ the Driving Range then outlines the property along holes 1 and 2.

From the green of hole #2, runners return along the cart path on Fairway #2 until the lake. The lake is mile #1. Runners go around the lake then continue down the rough of Fairway #16 until the woods; taking them to the cart path on Fairway #3. Runners continue on path to Fairway #4

then continue to the #4 green which is mile #2. Follow the cart path to Fairway #5 and continue to outline the property until the finish.