



2017 WIDEWATER CROSS COUNTRY INVITATIONAL

Sponsored by: Dave's Running Shop

Saturday, September 23, 2017

At Widewater Christian Youth Camp - 4050 State Route 24 in Liberty Center, Ohio

Schedule of Events

8:00 – 9:00	Teams Preview of Course	10:00	-Varsity Girls Orange Race
8:30	- Elementary Race (Grades 1-3)	10:45	-Varsity Boys Orange Race
8:45	- Elementary Race (Grades 4-6)	11:30	-Varsity Orange Awards
9:00	- Junior High Girls Race	11:30	-Varsity Girls Black Race
9:30	- Junior High Boys Race	12:15	-Varsity Boys Black Race
10:00	- Junior High Awards	1:00	- Varsity Black Awards

Awards: Team trophies to Top 2 teams in high school varsity races, Top 3 in junior high races. Top 25 individuals receive medals for all races.

Entries: Enter entire team roster at www.baumspage.com. The entry window will open at 8:00 AM on Sunday, August 20, 2017 and will close at 9:00 PM on Monday, September 18, 2017. Please note that there will be two races for both girls and boys varsity this year (Orange races and Black races). Junior High races will be combined (Orange & Black) for each race. **Any team not listed that wishes to attend may contact the Liberty Center Athletic Dept. for entry information or LC Coach Tim Atkinson at tatkinson@napoleonareaschools.org**

Race Format: This year all teams will be placed in two races, with the top 7 runners for each team being scored, and all other runners being displaced. High school teams that do not have at least 5 runners on their team may still run in their prospective divisional Varsity races. **There will be no Open/JV races. Junior high races will combine 7th and 8th grade boys and 7th and 8th grade girls from all divisions.**

Orange Division: Antwerp, Hilltop, Hopewell-Loudon, Seneca East, Kalida, Liberty Center, North Central, Tinora, Patrick Henry, Toledo Christian, Emmanuel Christian (Boys Only), Fayette, Montpelier, Edgerton, Stryker, and Wayne Trace.

Black Division: Bowling Green, Greenville, Avon Lake, Otsego, Fairview, Napoleon, Delta, Evergreen, Holgate, Pettisville, Swanton, and Archbold.

T-Shirts: T-shirts will be available the day of the race (\$15 per shirt). Please inform your athletes.

Concessions: We will have bottled water, sports drinks and food at reasonable prices located in the white concession trailer by the starting line.

Camp Lodge: The Widewater Lodge is off-limits to teams, coaches, and fans, as they will be having a retreat taking place during our event. We appreciate your help with this matter.

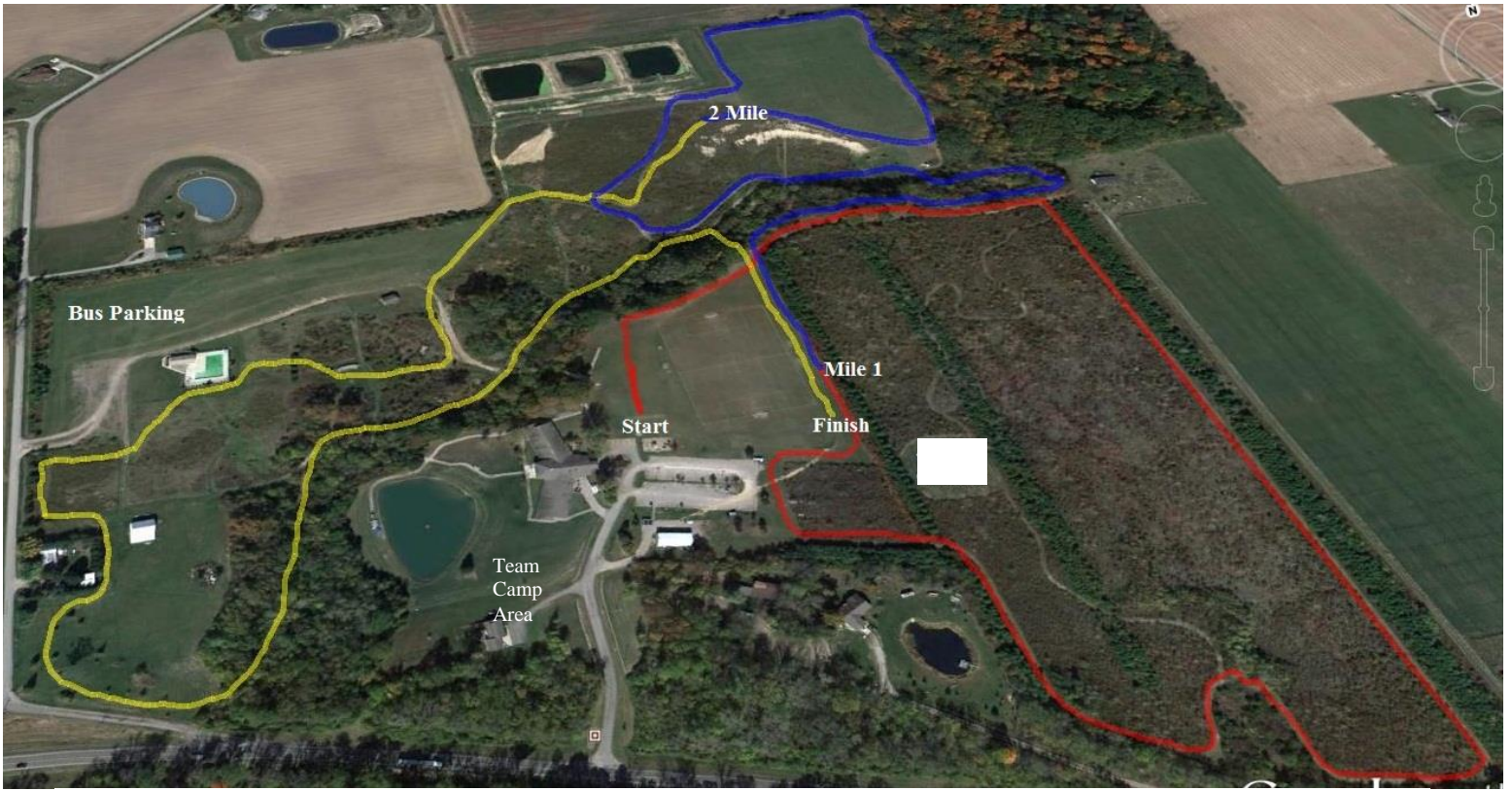
Fees:	\$75	HS Boys Team	\$75	HS Girls Team
	\$75	JH Boys Team	\$75	JH Girls Team
	\$10	Individual Runners		

Parking: All teams can be dropped off at the main parking lot, and buses will be directed to our secure bus lot in the back area of the course (see map). Spectator parking is in back lot as well, with handicap parking reserved for the main lot.


There will be a \$5 per car fee for parking.


Team Camps: In separate grass area beside lodge area (see course map).


Race Packets: Will be distributed to all coaches when the bus arrives at the drop off point by the lodge.



Widewater Invitational Course Map – 5k High School Races


 = 1st Mile

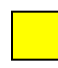
 = 2nd Mile

 = 3rd Mile



Widewater Invitational Course Map – 2 Mile Junior High School Races

 = 1st Mile

 = 2nd Mile