

**50<sup>th</sup> ANNUAL BILL BROWN CLASSIC CROSS COUNTRY MEET**  
**Saturday, September 22, 2018**  
**ONTARIO MARSHALL PARK**

<b>SCHEDULE:</b>	9:00	Girls High School ( <i>all schools, all runners</i> )
	9:45	Boys High School ( <i>all schools, all runners</i> )
	10:30	Girls Junior High ( <i>all schools, all runners</i> )
	11:00	Boys Junior High ( <i>all schools, all runners</i> )

**LOCATION:** Ontario is located five (5) miles west of Mansfield. The high school is on Shelby-Ontario Road between U.S. 30 and Ohio State Route 309. Buses will park at Ontario Middle School adjacent to the High School; Marshall Park is across the street from Ontario High School.

**COURSE:** The course is five kilometers (3.1 miles) for high school runners  
7<sup>th</sup> and 8<sup>th</sup> graders will run two miles

**ENTRY:** Entries must be submitted online through [www.baumspage.com](http://www.baumspage.com) **Submit a complete roster before 12:00 PM Wednesday, September 19<sup>th</sup>**. For details, see online entry instructions.  
Entry Fee: (if not already sent) \$ 150.00 fee (any or all events per school).

**AWARDS:** A. First and second place team trophies for all team events.  
B. Medals to seven (7) members of winning teams and top ten overall (10) finishers.  
Places eleven through twenty will receive ribbons.

**CONCESSIONS:** Concession stand will be available.

**T-SHIRTS:** Specially designed T-shirts will be available for sale at **only \$10.00** each.

## INSTRUCTIONS FOR COACHES

1. Please be sure to consult the maps in your packets when you arrive to familiarize your team with the course. High school course will be painted white and the middle school course will be painted blue. Maps are also available online at:  
<http://www.ontarioteacher.org/cc/bbrown.htm>
2. Result sheets will be available to coaches at the registration table as soon as possible. We will also hang them on the wall by the concession stand. Results will be posted on [www.baumspage.com](http://www.baumspage.com) after the meet as soon as possible as well.
3. Awards will be available once your school has completed participation.  
The awards will be available ONLY to coaches.
4. Buses should park at the Ontario Middle School with additional parking available at Ontario High School. Fan parking will be available at Stingel Elementary School. There will be no parking in Marshall Park where the course is located as at multiple points the course intersects the driveway. **Buses may enter the course to drop off athletes no later than 8:30 A.M.- the park will be cleared of all buses and traffic from 8:30 a.m. until the finish of the last race.** After 8:30, buses may drop off athletes at the entrances to the park or by using the Milligan Road (off of Shelby-Ontario Road) drop off location.
5. Be sure to submit your entire roster on *Baum's Page*. Schools are limited to one team (unlimited number) in each event.
6. *Ohio Race Day* will be providing electronic timing and scoring for the meet. Bibs and/or chips will be included when picking-up your packet.
7. Coaches should pick up their packets at the registration table near the concession stand and baseball fields.

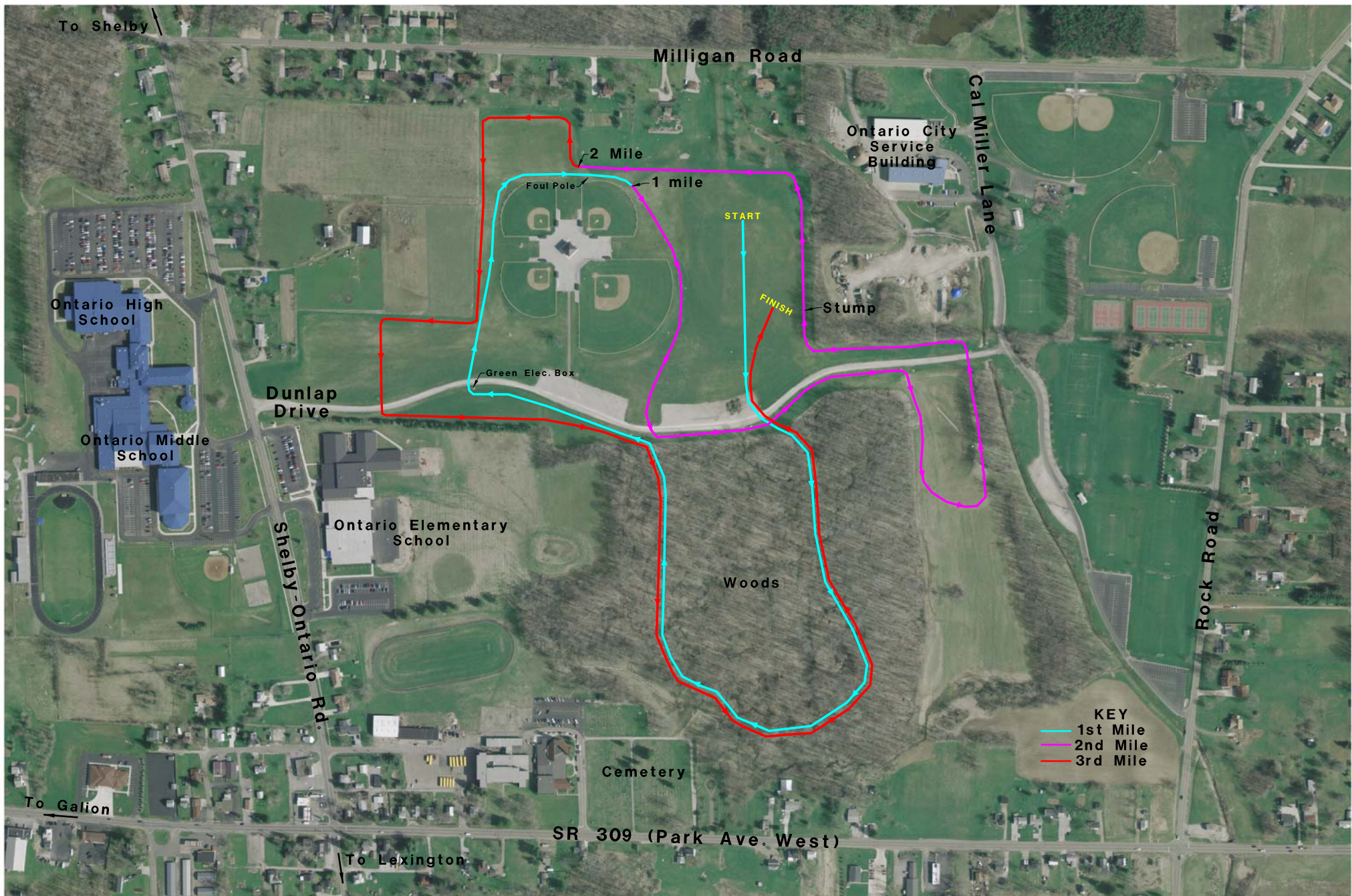
### Questions:

Phone: (419) 564 – 7362 (Coach Charlie Ridenour)

Email: [ridenour.charles@ontarioschools.org](mailto:ridenour.charles@ontarioschools.org) (Coach Charlie Ridenour)

# Ontario High School 5K Cross Country Course in Marshall Park

Ontario High School  
467 Shelby-Ontario Road  
Mansfield, Ohio 44906



ONTARIO MIDDLE SCHOOL    ONTARIO HIGH SCHOOL

PARKING

WEST

TO LEXINGTON

SHELBY - ONTARIO ROAD

PARKING

PARKING

STINGEL ELEMENTARY SCHOOL

DUNLAP DRIVE

HOUSES

FARM  
FENCE  
FENCE

KEY:  
1/4 MILE  
1/2 MILE

RETIREMENT COMPLEX

CHURCH

CEMETERY

FIRETRUCK

Electric Box

PARKING

BASEBALL FIELDS

2 MILE FENCE

ONTARIO CITY

SERVICE BUILDINGS

CAP MILLER LAKE

NORTH

ROCK ROAD

EAST

SOUTH

ROUTE 309

(PARK AVENUE WEST)

TO MARSHFIELD

MIDDLE SCHOOL 2 MILE CROSS COUNTRY COURSE - MARSHALL PARK

OVER FOR HIGH SCHOOL

