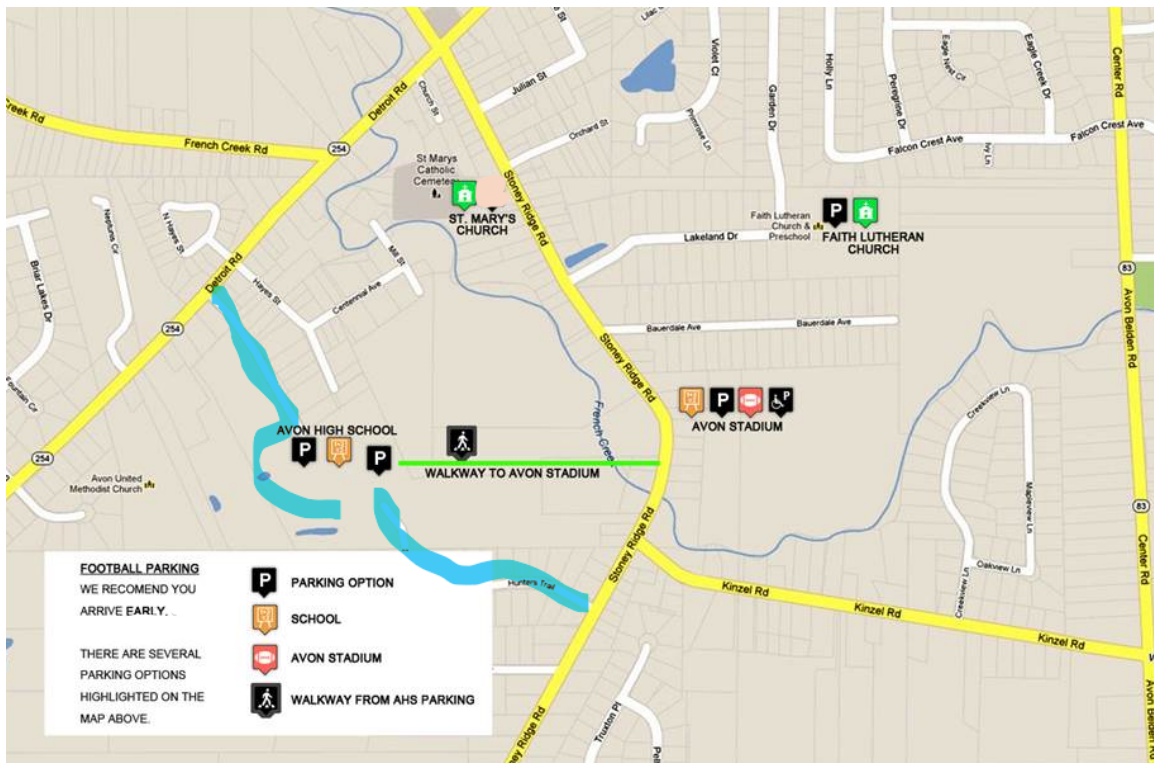
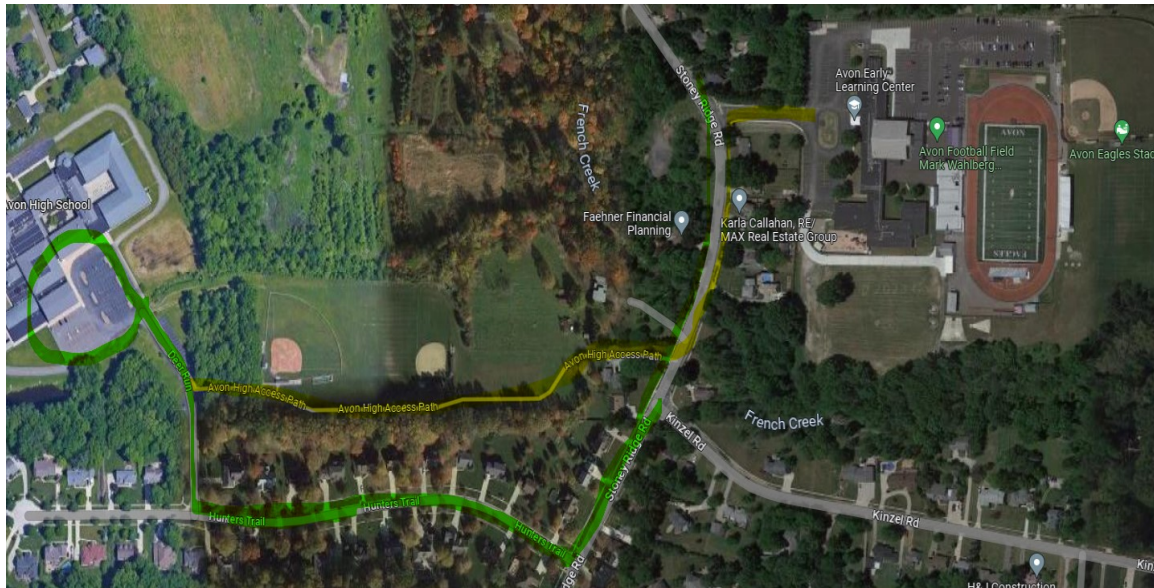


Parking Information if the Stadium Lot is closed or full



There is only one way in and one way out of our stadium. The **Blue lines** are the entrance to the south side of our high school. There is a walking path to our stadium that is about .6 of a mile. If you don't want to wait in traffic after the game, please consider parking at the back of our high school. The first photo is a satellite view. The Green lines are the entrance to the stadium and you can see the walking path by the softball field that will lead to the stadium.